



# SANTA CLAUS ARRIVES ON THE Fire Engine!



**DEC. 24<sup>th</sup>**

**3:30 pm**

**SILVERMINE TAVERN  
PARKING LOT**

# A Silvermine Tradition Santa Claus is Coming!

One of the oldest traditions in Silvermine is the arrival of Santa Claus on Christmas Eve at the Silvermine Tavern parking lot. This celebration has become the most popular event on our community calendar. And, having received official word from the North Pole, we are happy to report that once again, Santa will arrive on the SCA Antique Fire Truck. This year's festivities will begin promptly at 3:30 P.M. As usual, there will be lots of hot chocolate for everyone around the roaring bonfire in the Silvermine Tavern parking lot (courtesy of Frank and Marsha Whitman), while season's greetings are exchanged by all who attend.

For those who are new to the community (and for those who need a reminder for this once-a-year event), this is the way things work: During the morning of the 24th, and most **certainly before 2:00 P.M.**, you sneak away to the Silvermine Tavern front porch, where you will find a large box awaiting the arrival of your child's gift. **Label** the gift

with **your child's name in large block letters. Tie multiple gifts together.** (Occasionally, Santa has been known to forget his spectacles and he doesn't want any child to worry about being forgotten).



Later that afternoon, at approximately 3:40 P.M., you'll hear the jolly sound of Santa ringing bells from the back of the SCA Antique Fire Truck as he rounds the corner into the Tavern parking lot. For the next hour or so, the air will be filled with the merry sound of children's excited voices as gifts are opened and admired. And yes, Santa sent a message again this year,

saying the elves will be handing out candy canes to all those youngsters waiting to hear their names called!

Don't miss this very special annual tradition. Plan to join the festivities on **Friday, December 24th at 3:30 P.M. in the Silvermine Tavern parking lot.** Be sure to dress for the weather. In years past, Silvermine has resembled the North Pole!

## SilverMiler Road Race

The 12th Annual SilverMiler Road Race was held on October 9th for the benefit of the Silvermine Community Association Scholarship Fund. We would like to thank all the racers who participated in the three individual races, as well as the volunteers who made this worthwhile event possible.

## Silvermine Chefs

Calling all Silvermine chefs! Are you entertaining for the holidays? Don't you want to wear a Silvermine chef's apron? Visit [www.silverminenews.com](http://www.silverminenews.com) to look at the Silvermine chef's apron, along with T-shirts, coffee mugs, and tote bags—all featuring Silvermine's famous swan logo. The Silvermine Online Store features Silvermine merchandise for the whole family. What could be better than preparing a turkey while wearing a swan?

## Trash Walk

The Fall Trash Walk was held on November 6th. Silverminers fanned out from the Silvermine parking lot and cleaned up our sidewalks and roadways. Thanks to all who participated!

## Silvermine Walks

The Norwalk Department of Health has created 3 walking routes in Silvermine ranging from 2 miles to 3.6 miles. For maps, information about the routes, and a narrative about historic Silvermine, visit [www.norwalkhealth.com](http://www.norwalkhealth.com), then choose "Walking Routes."

*Silvermine News* is published by the Silvermine Community Association. Contributions will be published upon discretion of the Editor and may be edited. Write to us c/o The Silvermine Tavern, 194 Perry Ave., Norwalk, CT 06850.

Editor: Jerry Gleason, [jerry\\_gleason@gleasongrp.com](mailto:jerry_gleason@gleasongrp.com).



# SCA Scholarship Awards 2005 Applications Now Being Accepted

The Silvermine Community Association has been awarding scholarships to community residents for almost 50 years. More than 281 young students have been helped on their way to higher education through this very unique neighborhood program.

In past years, the individual scholarship awards have ranged from \$250 to \$3,000. Each year, based on the number of applicants and their qualifications, the number of scholarship recipients varies. Generally there are between three and six recipients.

## Application Requirements

To be eligible for the SCA Scholarship:

1. The applicant must be a recent graduate from a high school/technical/post graduate school, or anticipate graduating in the spring of 2005.
2. The applicant must have been accepted (or anticipate receiving acceptance) by an accredited college or post-secondary school/conservatory (art, music, or technical).
3. **The applicant MUST reside in the Silvermine Area of New Canaan, Norwalk, or Wilton (as defined by the map/street list in the application).**

If you receive this newsletter, anyone who lives with you and meets the above criteria is eligible to apply for the SCA Scholarship. Applications will be available in January at all local high school guidance offices. Applications also can be obtained by calling 847-8354. Completed applica-

tions with supporting documentation must be submitted by no later than **Monday, April 18, 2005** to:

The Scholarship Selection Committee  
c/o the Silvermine Tavern  
194 Perry Avenue  
Norwalk, CT 06850

All applicants will be interviewed by the SCA Scholarship Selection Committee. Scholarships will be awarded based on academic achievement, financial need, and community service, as well as extracurricular activities and career goals.

The 2005 SCA Scholarship awards presentation ceremony will be held in June in the gardens of the Silvermine Guild. The date will be announced in the spring newsletter.



## Community Support

The Silvermine Community Scholarship Awards relies entirely on the support of the Silvermine neighborhood for its funding. Over the past several years, we have made awards which have totaled between \$3,500 and \$8,000. Accordingly, the Silvermine Community Association must raise at least \$3,500 if we want to continue the long running tradition of helping our young neighborhood students.

Please join with those neighbors who have already committed to support this worthy endeavor. Become a member of the SCA, support our functions, and make a donation to the Scholarship Fund. Remember, many small donations result in many well deserved awards! Fill out the form on the back of this newsletter and return it to the Silvermine Tavern.

---

## Spring Bulb Sale a Success!

With the help of White Flower Farm, the Silvermine Community Association's Fifth Annual Bulb Sale was a resounding success! Offering ten bulb selections—ranging from daffodils, narcissus, allium, and three wonderful mixtures—there was something for every gardener. The "Rhapsody in Blue" mixture (which included anemones, iris, muscari, and scilla) was the big hit of the sale. With a scent reminiscent of old garden roses and a peachy pink cup, the "Fragrant Rose" daffodil was a popular first-time selection.

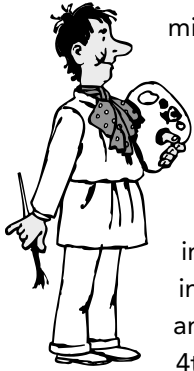
The bulb sale is a fundraiser for the Silvermine Scholarship Fund, so thanks to all of you who purchased bulbs this year. Let's just hope spring comes early!



# Call to Artists

by Nancy Lloyd

The first annual "Artists in Residence" Art Show will be held in the first quarter of 2005 at the Silvermine Tavern. The show is open to all Silvermine artists in any media. Sponsored by the Silvermine Community Association, the week-long show will open with a reception on Sunday, February 27th, to which artists are encouraged to invite guests. The closing weekend will coincide with the Association's winter "Meet and Mingle" cocktail party on Friday, March 4th.



The show is starting to shape up! Some prominent neighborhood artists have already signed up. I

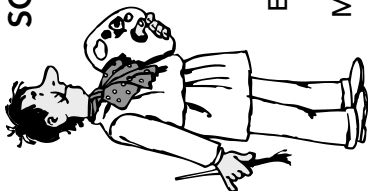
will soon be contacting participants to get photographs of their work to be used in publicity. If you are not contacted within the next month regarding photographs, please contact me to make sure that you are included.

**This is my last chance** to communicate with you through the newsletter before the show. If you have not yet signed up to participate, **please sign up now!** Contact me by phone (972-9030), by e-mail ([nmklloyd@yahoo.com](mailto:nmklloyd@yahoo.com), using "SCA Art Show" as the subject), or fill out the entry form below and send it to:

Nancy Lloyd  
275 Mill Road  
New Canaan, CT 06840

SCA "Artists in Residence" Art Show

Name: \_\_\_\_\_  
Address: \_\_\_\_\_  
Telephone Number: \_\_\_\_\_  
E-Mail Address: \_\_\_\_\_  
Medium: \_\_\_\_\_



## Silvermine: Home to Artists



Solon Borglum

Since the summer of 1906, when Solon Borglum purchased "Rocky Ranch," his home and workshop on what is now Borglum Road, Silvermine has been home to many artists. Originally these Silvermine artists were known as the "Knockers," who got together on Sunday to "knock" each other's work. Over time, the "Knockers" became the Silvermine Group of Artists, which led to the formation of the Silvermine Guild of Artists. Starting in 1906 and continuing to the present, artists of all types—painters, sculptors, writers, musicians, illustrators, editors, opera singers, critics, and

poets—have been drawn to our special river valley. The "Artists in Residence" Art Show reestablishes Silvermine's unique relationship with the arts, now nearly 100 years old!



# Silvermine Profiles

## Roy Doty

Silvermine is often graced with posters about events like the Silvermiler Road Race, the arrival of Santa Claus, and the Pancake Breakfast. The cartoons for these posters, and for the first page of the Silvermine News, are the creations of Roy Doty, a cartoonist for over 58 years—and a fellow Silverminer (at least until last year).



Roy says that he wanted to be a cartoonist since fourth grade. When he went to the Columbus College of Art and Design, they tried to make him into a fine artist. Luckily, the war intervened. "The Army," Roy said, "makes musicians into cooks and cooks into drill sergeants. It made me into a cartoonist." He was especially influenced by French and British cartoonists and soon began to freelance for the London *Daily Mail* and *Elle*.

After his discharge, Roy found his way to New York. He soon was doing cartoons and ads for the *New York Times Magazine*, CBS, and *Seventeen Magazine*. But Roy did more than draw. He had some memorable appearances

on the "Ernie Kovacs Show," which led to his own children's television show, "The Roy Doty Show," appearing every weekday morning from 1952 to 1955. In the 1960s he created the "Laugh-In" cartoon strip. His "Wordless Workshop" cartoon has been running for 50 years and appears monthly in *The Family Handyman*. Amazingly, Roy has found time to illustrate and/or write 176 books.

Roy lived in Silvermine on Grey Hollow Road for 20 years. He now lives in Dublin, Ohio, where he continues to work—and golf.

"Silvermine Profiles" is a new feature of the *Silvermine News*. If you know of someone who should be profiled, contact Jerry Gleason at 847-6658.

\* *Tree Trimming* \* *Goodies* \* *Caroling* \* *Crafts* \* *Kettle Corn* \* *and much more* \*

Goodies

Santa on Fire Engine



SILVER HILL HOSPITAL  
RESTORING MENTAL HEALTH SINCE 1931

*Join us for an old-fashioned neighborhood open house  
to be held at Silver Hill Hospital, East Campus  
Sunday, December 5th  
at the John G. Martin Center, 1:30 p.m. to 5:00 p.m.  
Enjoy the holiday season with your neighbors  
Children Welcome*

Caroling

\* *Tree Trimming* \* *Goodies* \* *Caroling* \* *Crafts* \* *Kettle Corn* \* *Santa on Fire Engine* \* *and more* \*

Please cut off, fill out and mail to: **Diane Lee, Silver Hill Hospital, 208 Valley Road, New Canaan CT 06840**

*Holiday Season Open House at Silver Hill Hospital Sunday, December 5th  
Please RSVP by December 1st*

*I/we will be able to attend* Name \_\_\_\_\_

*Number of adults that will be attending* \_\_\_\_\_

*Number of children that will be attending* \_\_\_\_\_

# Silvermine Community Association News

## A New Membership Year



October was the official kick-off for the 2005 Membership Drive. In 2004 we were happy that there were 367 members, more than we've ever before had. And we want to keep the momentum going in 2005!

Silvermine—comprised of sections of Norwalk, New Canaan, and Wilton—is a beautiful area with great history and a rare sense of community. We want to make 2005 the best year we've ever had for Silvermine, the Silvermine Community Association, and for all of its members!

In case you're new to the area, or haven't been aware of the kinds of things that the SCA does, some highlights from 2004 include:

- A record-breaking Pancake Breakfast that served 400 hungry neighbors.
- A Scholarship Fund that awarded three young Silvermine women \$2,000 each for their exceptional achievements.
- The arrival of Santa Claus on Christmas Eve in the antique fire engine.
- The very first Silvermine House Tour, which included seven historic homes and a Silvermine Tavern picnic lunch at Silver Hill.
- The very first Silvermine Walk, part of the city of Norwalk's initiative called "NorWALKERS."
- Spring and Fall Trash Walks that kept Silvermine clean.
- A Bulb Sale that featured 10 spring-blooming, deer-resistant bulbs.

- Two Meet and Mingle evenings, when you could see old friends and meet new neighbors.

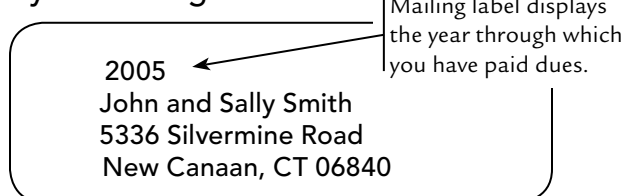
All these events also are planned for next year. We've also received suggestions about new events and services that we could offer. Because of this, the Membership Committee has organized a series of get-togethers to brainstorm ideas for new events and services (including adult events, children's events, hobbies, special interest groups, etc.). We don't have definite dates yet, but we'll be letting members know about them via e-mail.

We want to hear your suggestions! Come to the brainstorming get-togethers or contact Remi Hahn (846-8679 or [rhahn@optonline.net](mailto:rhahn@optonline.net)) or Don Nelson (847-3268 or [DONCARS@AOL.com](mailto:DONCARS@AOL.com)).

This year our goal is to contact every household in Silvermine. Although we make every effort to keep our mailing list updated, it's always possible to miss someone. If you, or anyone you know, is not receiving this newsletter or hasn't been contacted about the Silvermine Community Association, please let us know!

### Are You a Member?

To find out if you are a member, check your mailing label.



## National Historic District

As many of you may know the Silvermine Community Association and NASH (Norwalk Association of Silvermine Homeowners) are attempting to achieve recognition of Silvermine as a National Historic District. This designation provides recognition of an important historic area at the state and national level.

Designating Silvermine as a National Historic District doesn't regulate home construction or restrict options in building, renovating, buying, or selling property. It can, however, have a positive effect on property values, as well as raising residents' appreciation for historic structures, thus leading to their preservation. Additionally, for about

\$40, a small plaque is available for historic houses in the District.

The September Historic House Tour funded the hiring of an historic-district consultant who has completed the Norwalk portion. Work remains to be done in New Canaan and Wilton. A concern is the amount of infill (new houses or those less than 50 years old) on historic roads.

To assist in the National Historic District effort, if anyone on Silvermine Road or Mill Road in New Canaan—or Borglum Road or Mill Road in Wilton—has plans with footprints of their houses that could be copied, please contact Leigh Grant at 846-4577 or Anne Carbone at 846-9630.



---

## 2005 Executive Board

---

### Co-Presidents

David McMahon  
Pat Duncan  
Sue Cruikshank

### Immediate Past President

Joe Rumore

### Vice Presidents

Remi Hahn  
Jeff Turner

### Secretaries

Ed McNamara  
Emily Kelting

### Treasurers

Sue Palinkos  
Mark Ryan

### Monthly Board Meetings

Monthly Board Meetings are held at 7:30 P.M. on the first Wednesday of the month at the Silvermine Tavern. They are open to all and—thanks to Frank Whitman, proprietor of the Silvermine Tavern—coffee and cookies are often provided.

## UPCOMING EVENTS

- 12/1** Open Monthly Board Meeting
- 12/24** Santa in Silvermine, 3:30 P.M.  
Silvermine Tavern Parking Lot
- 1/5** Open Monthly Board Meeting
- 2/2** Open Monthly Board Meeting
- 2/27** Artists In Residence Art Show  
Opening Reception  
Silvermine Tavern, 3:00 – 5:30 P.M.  
Runs through 3/5
- 3/2** Open Monthly Board Meeting
- 3/4** Winter Meet & Mingle Cocktail Party  
Silvermine Tavern, 6:30 P.M.
- 3/12** Pancake Breakfast  
Silvermine School, 8:00 – 11:00 A.M.
- 4/6** Open Monthly Board Meeting
- 4/18** SCA Scholarship Applications Deadline

---

## 2005 Members (as of 11/3/04)

---

### Norwalk

Abraham & Margaret Alvarado  
Robert, Jr. & Catherine Avery  
Nicholas & Elaine Braccia  
Kathryn Nichols & Mark Brombaugh  
Scott & Wendy Carter  
Nicholas & Ariline Cioffi  
Vincent & Mary Clark  
Michael & Shiela Cockcroft  
George & Eileen Connors  
Frank & Lee DeMilo  
William & Mary Ann English  
Peter, Lois & Nick Esposito  
Sue Fay  
Angelo & Karen Giordano  
Mark & Susan Hastings  
Philip & Jacqueline Heinrich  
Trip & Julie Hunter  
Rob & Pam Jacob  
John & Sue Kahler  
David & Yolanda Karpel  
John & Pam Kearns  
Gregory Kryspin  
Robert & Henrietta Lachman  
Philip & Rosemarie Lanard

Alfred & Lucille Leach  
Rich & Mary Linke  
Martin Mahoney  
Irwin & Estelle Metviner  
Winthrop & Deborah Miller  
Jean Mitchell  
Nicholas & Emma Nardi  
Robert, Jr. & Kathryn Olson  
George & Dorothy Ostasiewicz  
Loyola & Sue Palinkos  
John & Christine Palmer  
Roger & Gail Ratchford  
Barbara Saviano  
Hans & Karen Schwartz  
Craig & Nan Sinclair  
Harry & Doris Smith  
Jane Trehubenko  
Peggy White  
Trudy Yff

### Wilton

Bruce & Susan Cruikshank  
Dave & Natalie Dearborn  
Linda Fry  
Stephen & Lisa George

David & Susan Graybill  
Alex & Betty Halpern  
Wanda Hamilton-Schmitt  
Alan & Jane Handler  
John & Anne Oliver  
Richard & Norma Perkins  
Paul & Judith Rodriguez  
Matthew & Susan Schmitt  
David & Joan Schmitt  
P.C. Schmitt Jr. & Family  
Vlad & Denise Spitzer  
James & Cynthia Ward  
Patricia Leigh & Patricia Weyer  
Daniel & Elizabeth Wilson  
Elliot & Janice Zelevansky

### New Canaan

Nicholas & Margaret Campbell  
Rink & Denny Dupont  
Charlie & Joyce Heck  
Kevin & Susan O'Brien  
Michael & Joan O'Brien  
The Reinemann Family  
Eric & Katherine Welles  
Stephen & Joyce Wilson



Silvermine News  
Silvermine Community Association  
c/o The Silvermine Tavern  
194 Perry Ave.  
Norwalk, CT 06850


PRSR STD  
U.S. POSTAGE PAID  
NORWALK, CT  
Permit No. 294



**Silvermine Community Association Membership**  
January 1 through December 31, 2005

Send this form and your membership dues to:  
The Silvermine Community Association  
c/o The Silvermine Tavern  
194 Perry Ave.  
Norwalk, CT 06850

Silvermine Ct.  
2005



2005 Membership Dues per family \$ 25.00  
Scholarship Fund \$ \_\_\_\_\_  
Antique Fire Truck Fund \$ \_\_\_\_\_  
General Contribution \$ \_\_\_\_\_  
**Total enclosed** \$ \_\_\_\_\_

Family Name: \_\_\_\_\_  
Address: \_\_\_\_\_  
Town: \_\_\_\_\_  
Telephone: \_\_\_\_\_  
E-Mail Address: \_\_\_\_\_

- Yes, I'd like to receive the Newsletter via e-mail.
- No, I'd rather receive the Newsletter via regular mail.

\*\*This information is not shared with any other organization.\*\*

- Please contact me, I'd like to join the Board.
- Please contact me, I'd like to work with this committee:
  - Membership Drive
  - Newsletter
  - Pancake Breakfast
  - Website
  - Road Race
- Please contact me, I'd like to discuss \_\_\_\_\_

You can now contact us by going to the official  
SCA website at [www.silvermine.com](http://www.silvermine.com).